



2023-2024
Annual Corporate
Partnerships

Who We Are



Habitat GSF Mission

Habitat for Humanity Greater San Francisco (Habitat GSF) has been leading the response to the Bay Area's affordability crisis for over 30 years by building and sustaining affordable homeownership for low-income working families across San Mateo, San Francisco, and Marin Counties.

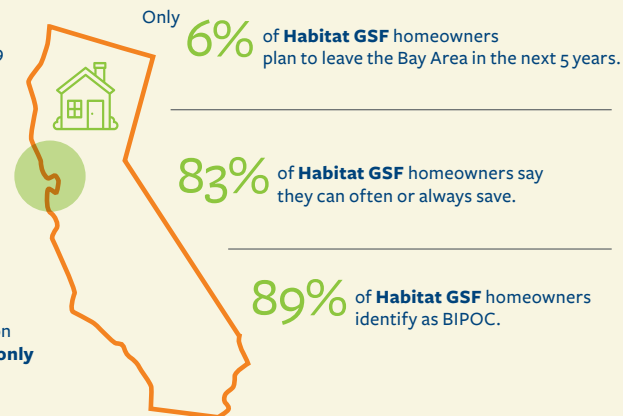
The Problem

The escalating housing costs of our region have grown to catastrophic proportions, but the truth is that thousands of families have been denied the opportunity of homeownership for decades.

Migration out of San Francisco **increased 30%** from 2019 to 2020.

20% of CA residents pay **over 50%** of their income on housing.

55% of the population in our region identify as BIPOC, but make up **only 44%** of the homeowners.



Who we serve

Habitat GSF serves low-income working families that fall within the 50-120% Area Median Income (AMI) range.

- Households in this income range typically earn too much to qualify for subsidized housing but too little to afford market rate housing.
- Many of these families live in overcrowded, often unsuitable, or unstable conditions.
- The families we serve are often facing displacement out of their communities.



Outcomes for Habitat GSF families



89% of current homeowners identify as people of color, compared to our region where only 44% of homeowners identify as BIPOC

According to our most recent homeowner survey:





Our Progress

We drive impact through three key programs:



Home Building

New affordable home construction



Home Preservation

Provide critical repairs for low-income, long-time homeowners



Advocacy

Promote affordable homebuilding and champion affordable homeownership

Our Impact

283
new homes built

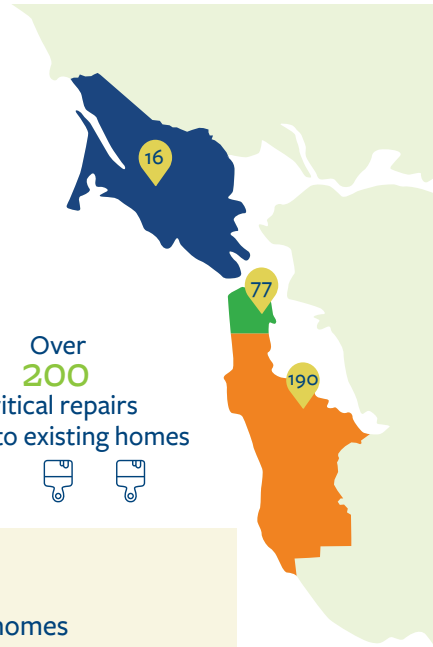


Marin County
16 homes

San Francisco County
77 homes

San Mateo County
190 homes

Over
200
critical repairs
made to existing homes



What's Next

Join us in accomplishing Habitat GSF's bold goal to build and prepare 250 new homes and conduct critical repairs on 400 homes by 2027, transforming the lives of over 500 families

Make change happen 



Make an impact locally while engaging your employees throughout the year

In Person Engagement

Volunteer with your team, employee resource groups, or clients for an unforgettable experience.

Events

Join one of our signature builds and events throughout the year to celebrate our achievements addressing the affordable housing crisis.

Showcase Your Partnership

Tap into tailored co-branded packages that amplify your company's social impact commitments across each of our networks.

Speaking Engagements

Habitat GSF leadership is ready to share their expertise with your employees and key stakeholders through customized events.



Signature Builds

Habitat GSF's Signature Builds celebrate the contributions of our vibrant and diverse communities. We dedicate a month to each with dedicated volunteer days throughout to honor women, LGBTQIA+ individuals, and veterans. In sponsoring a Signature Build your whole team can demonstrate their support of their community as well as affordable homeownership in the Bay Area with a volunteer team build day, as well as prominent brand placements.

Join us for one or more of our upcoming signature builds including:

- Veterans Build – November 2023
- Women Build – March 2024
- Build with Pride – June 2024

Framing the Future



Framing the Future is Habitat GSF's signature fundraising event celebrating our volunteers, partners, and the wider community who share our ambitions of an affordable and thriving Bay Area and work with us to make that vision a reality. Hundreds of businesses, civic and community leaders, and industry professionals will join Habitat GSF leadership in dialogue on how we meet the challenges and opportunities of the changing housing landscape in the coming year.

2023 Event Details

WHEN: The evening of Thursday, September 21, 2023

WHERE: San Francisco City Hall

WHAT: Celebrate your company's commitment to affordable housing with food, drinks, and entertainment!





Showcase your employee-led community engagement and company's commitments to addressing the affordable housing crisis in our region through customized digital marketing packages:

Social Media Highlights

Create visibility for your company's good work on the ground through a customized social media package.

Case Studies

Capturing the impact of our partnership that spotlights your company's contributions to drive progress toward affordable homeownership.

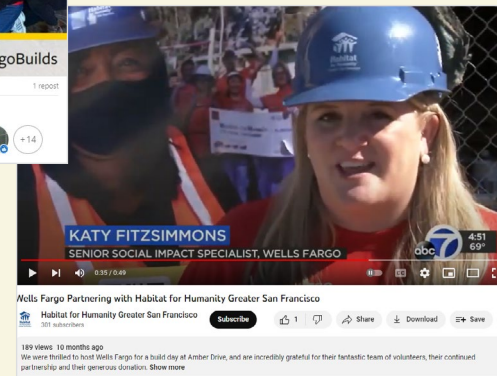
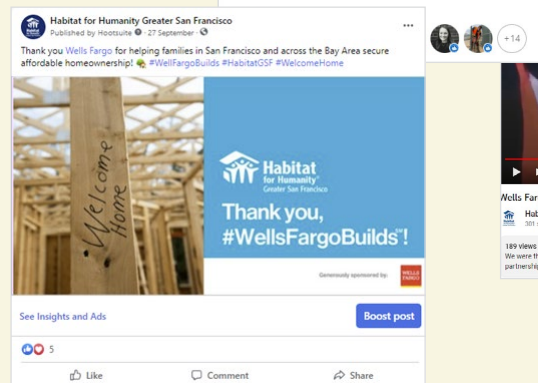
Speaking Engagements

Habitat GSF leadership speaking engagements during volunteer activities or custom events.

Exclusive Press Release

Showcase our partnership.

WELLS
FARGO



Premium Team Builds



In person employee engagement



Home Preservation Repairs

Prevent displacement for longtime Bay Area residents by supporting critical home repair projects with your team, such as demolition, fence repair, painting, and more.



Playhouse Builds

Build a fully functional playhouse that will be donated to low-income families, childcare centers, or community centers. This is inclusive to all skills and abilities with a variety of tasks like designing, painting, cutting, and assembly.



New Construction

Help Habitat GSF deliver the promise of homeownership by building affordable homes at one of our new developments. Depending on the construction schedule, tasks can include framing, site work, exterior finishes, painting, flooring, and insulation with training included. New construction opportunities will return soon!

Benefits Overview



\$100k



\$100,000

Companies automatically receive the following **SIX** opportunities:

1

Up to SIX in-person volunteer engagements for up to 20 people per day.

2

Partnership showcased across HGSF's marketing channels in addition to a co-created exclusive press release or partnership case study.

3

Leadership at your company invited to speak at HGSF's Framing the Future.

4

Gold level sponsorship of Framing the Future. Benefits include table, event tickets, and a comprehensive marketing plan.

5

Option to have HGSF leadership speak virtually or in-person through a fireside chat or other jointly established event format.

6

Premier Signature Build sponsor, can be split over more than one Signature Build and includes a volunteer day for your team.

Benefits Overview



\$75k - \$50k

\$75,000

Pick **FOUR** of the following five options:

- 1** Up to **FIVE in-person volunteer** engagements for up to 20 people.
- 2** Partnership showcased across **HGSF's marketing channels** in addition to a co-created exclusive press release or partnership case study.
- 3** **Gold level sponsorship** of Framing the Future benefits includes a full table, tickets for employees, and comprehensive marketing plan.
- 4** Option to have **HGSF leadership speak virtually or in-person** through a fireside chat or other jointly established event format.
- 5** **Premier Signature Build sponsor**, can be split over more than one Signature Build and includes a volunteer day for your team.

At this level and above, we are happy to customize the opportunity to fit our shared goals.

\$50,000

Pick **THREE** of the following five options:

- 1** Up to **FOUR in-person volunteer** engagements for up to 20 people.
- 2** Partnership showcased across **HGSF's marketing channels** in addition to a co-created exclusive press release or partnership case study.
- 3** **Silver level sponsorship** of Framing the Future benefits includes a half table, tickets for employees, and comprehensive marketing plan.
- 4** Option to have **HGSF leadership speak virtually or in-person** through a fireside chat or other jointly established event format.
- 5** **Premier Signature Build sponsor**, can be split over more than one Signature Build and includes a volunteer day for your team.

Benefits Overview



\$25k - \$15k

\$25,000

Pick **THREE** of the following four options:

1

Up to TWO in-person volunteer engagements for up to 20 people.

2

Select digital marketing opportunities.

3

Bronze level sponsorship of Framing the Future benefits includes attendance and a comprehensive marketing plan with our most key supporters.

4

Premier Signature Build sponsor, can be split over more than one Signature Build and includes a volunteer day for your team.

\$15,000

Pick **TWO** of the following three options:

1

ONE in-person volunteer engagement for up to 20 people (or option to split into two days for up to 10 people).

2

Select digital marketing opportunities.

3

Premier Signature Build sponsorship, includes a volunteer day for your team.



Corporate Partners



KIRKLAND & ELLIS



The **SOBRATO** Organization



WAREHAM DEVELOPMENT





300 Montgomery Street Suite 450
San Francisco, CA 94104
(415) 625-1000
corporate@habitatgsf.org

www.habitatgsf.org